



# TEAMWEAR MULTISPORT

2026 EDITION

# SPECIALIST SPORTS

2026/27 ADIDAS TEAMWEAR CATALOGUE





# MATCHWEAR

MEN & YOUTH



ALL PRODUCTS SUITABLE  
FOR ALL TEAMSPORTS



COLLECTION MADE IN PART  
WITH RECYCLED MATERIALS

**JERSEY**

ENT26 JSY

**FIT** SLIM  
**TECHNOLOGY** CLIMACOOL  
**MATERIAL** 100% RECYCLED POLYESTER  
**ADULT SIZES** XS, S, M, L, XL, 2XL, 3XL  
**YOUTH SIZES** 5-6Y, 7-8Y, 9-10Y, 11-12Y, 13-14Y  
**LIFECYCLE** |—————→ FEB 2030



**BLACK  
WHITE**  
 ADULT JZ2505  
 YOUTH JZ2524



**TEAM NAVY BLUE 2  
WHITE**  
 ADULT JZ2504  
 YOUTH JZ2522



**TEAM POWER RED 2  
WHITE**  
 ADULT JZ2501  
 YOUTH JZ2523



**TEAM ROYAL BLUE  
WHITE**  
 ADULT JZ2506  
 YOUTH JZ2531



**TEAM GREEN  
WHITE**  
 ADULT JZ2503  
 YOUTH JZ2528



**TEAM LIGHT GREY  
WHITE**  
 ADULT JZ2511  
 YOUTH JZ2525



**WHITE  
BLACK**  
 ADULT JZ2508  
 YOUTH JZ2532



**LOCKER ROOM**  
 CUSTOMIZABLE



# ENTRADA 26

## JERSEY LONGSLEEVE

ENT26 JSY LS

**FIT** SLIM  
**TECHNOLOGY** CLIMACOOL  
**MATERIAL** 100% RECYCLED POLYESTER  
**ADULT SIZES** XS, S, M, L, XL, 2XL, 3XL  
**YOUTH SIZES** 5-6Y, 7-8Y, 9-10Y, 11-12Y, 13-14Y

LIFECYCLE | —————> FEB 2030



**BLACK  
WHITE**  
ADULT KF5851  
YOUTH KF5879



**TEAM NAVY BLUE 2  
WHITE**  
ADULT KF5850  
YOUTH KF5877



**TEAM POWER RED 2  
WHITE**  
ADULT KF5847  
YOUTH KF5878



**TEAM ROYAL BLUE  
WHITE**  
ADULT KF5852  
YOUTH KF5886



**WHITE  
BLACK**  
ADULT KF5854  
YOUTH KF5874



**BLACK  
WHITE**  
ADULT JZ2521  
YOUTH JZ6531



**TEAM NAVY BLUE 2  
WHITE**  
ADULT JZ2513  
YOUTH JZ6532



**TEAM POWER RED 2  
WHITE**  
ADULT JZ2517  
YOUTH JZ6528



**TEAM ROYAL BLUE  
WHITE**  
ADULT JZ2520  
YOUTH JZ6524

## SHORT

ENT26 SHO

**FIT** REGULAR  
**TECHNOLOGY** CLIMACOOL  
**MATERIAL** 100% RECYCLED POLYESTER  
**ADULT SIZES** XS, S, M, L, XL, 2XL, 3XL  
**YOUTH SIZES** 5-6Y, 7-8Y, 9-10Y, 11-12Y, 13-14Y

LIFECYCLE | —————> FEB 2030



# RUNNING ADIZERO ESSENTIALS

## SINGLET

ADIZERO E SNGLT

**FIT** SLIM  
**TECHNOLOGY** AEROREADY  
**MATERIAL** 100% RECYCLED POLYESTER  
**ADULT SIZES** XS, S, M, L, XL, 2XL  
**YOUTH SIZES** 5-6Y, 7-8Y, 9-10Y, 11-12Y, 13-14Y

LIFECYCLE | —————> FEB 2028



**BLACK**  
 ADULT IM8586  
 YOUTH IT5061

**TEAM POWER RED 2**  
 ADULT IX2854  
 YOUTH IT5062

**TEAM ROYAL BLUE**  
 ADULT IX2855  
 YOUTH IT5059

**WHITE**  
 ADULT IX2853  
 YOUTH IT5060

## TEE

ADIZERO E TEE

**FIT** SLIM  
**TECHNOLOGY** AEROREADY  
**MATERIAL** 100% RECYCLED POLYESTER  
**ADULT SIZES** XS, S, M, L, XL, 2XL, 3XL  
**YOUTH SIZES** 5-6Y, 7-8Y, 9-10Y, 11-12Y, 13-14Y

LIFECYCLE | —————> FEB 2028



**BLACK**  
 ADULT IN1156  
 YOUTH IT5054

**TEAM POWER RED 2**  
 ADULT IT1828  
 YOUTH IT5055

**TEAM ROYAL BLUE**  
 ADULT IT1469  
 YOUTH IT5057

**WHITE**  
 ADULT IN1157  
 YOUTH IT5056

## SHORT

ADIZERO E SHORT

**FIT** SLIM  
**TECHNOLOGY** AEROREADY  
**MATERIAL** 100% RECYCLED POLYESTER  
**ADULT SIZES** XS, S, M, L, XL, 2XL  
**LIFECYCLE** | —————> FEB 2028



**BLACK**  
 ADULT IN1159

**TEAM POWER RED 2**  
 ADULT IT1827

**TEAM ROYAL BLUE**  
 ADULT IT1467

## SHORT TIGHT

ADIZERO E S TGT

**FIT** TIGHT  
**TECHNOLOGY** AEROREADY  
**MATERIAL** 79% RECYCLED POLYESTER / 21% ELASTANE  
**ADULT SIZES** XS, S, M, L, XL, 2XL  
**LIFECYCLE** | —————> FEB 2028



**BLACK**  
 ADULT IT5511

**TEAM POWER RED 2**  
 ADULT IT5512

**TEAM ROYAL BLUE**  
 ADULT IT5513

## SPLIT SHORT

ADIZERO E SPLIT

**FIT** SLIM  
**MATERIAL** 90% RECYCLED POLYESTER / 10% ELASTANE  
**ADULT SIZES** XS, S, M, L, XL, 2XL  
**YOUTH SIZES** 5-6Y, 7-8Y, 9-10Y, 11-12Y, 13-14Y  
**LIFECYCLE** | —————> FEB 2028



**BLACK**  
 ADULT IM8585  
 YOUTH IN8675

**TEAM POWER RED 2**  
 ADULT IX4893  
 YOUTH IN8676

**TEAM ROYAL BLUE**  
 ADULT IX4894  
 YOUTH IN8677

# RUNNING ADIZERO ESSENTIALS

## JACKET

ADIZERO E JCKT

**FIT** SLIM  
**MATERIAL** 100% RECYCLED POLYESTER  
**ADULT SIZES** XS, S, M, L, XL, 2XL  
**YOUTH SIZES** 5-6Y, 7-8Y, 9-10Y, 11-12Y, 13-14Y

LIFECYCLE | —————> FEB 2028



**BLACK**  
 ADULT IT7585  
 YOUTH IV7170

**TEAM POWER RED 2**  
 ADULT IT1825  
 YOUTH IV7169

**TEAM ROYAL BLUE**  
 ADULT IT1463  
 YOUTH JD7135

**WHITE**  
 ADULT IT7586



**BLACK**  
 ADULT IN1164

**TEAM POWER RED 2**  
 ADULT IT1826

**TEAM ROYAL BLUE**  
 ADULT IT1465

## LONG TIGHT

ADIZERO E L TGT

**FIT** TIGHT  
**TECHNOLOGY** AEROREADY  
**MATERIAL** 85% RECYCLED POLYESTER / 15% ELASTANE  
**ADULT SIZES** XS, S, M, L, XL, 2XL, 3XL  
**LIFECYCLE** | —————> FEB 2028

# COURT SPORTS

## COURT POLO

**FIT** SLIM  
**TECHNOLOGY** AEROREADY  
**MATERIAL** 100% RECYCLED POLYESTER  
**ADULT SIZES** XS, S, M, L, XL, 2XL

LIFECYCLE | —————> FEB 2028



**BLACK**  
ADULT JI5915BLK

**TEAM NAVY**  
ADULT JI5915NVY

**WHITE**  
ADULT JI5915WHT

## COURT TEE

**FIT** SLIM  
**TECHNOLOGY** AEROREADY  
**MATERIAL** 100% RECYCLED POLYESTER  
**ADULT SIZES** XS, S, M, L, XL, 2XL  
**YOUTH SIZES** 5-6Y, 7-8Y, 9-10Y, 11-12Y, 13-14Y

LIFECYCLE | —————> FEB 2028



**BLACK**  
ADULT JI5912BLK  
YOUTH JJ0657BLK

**TEAM NAVY**  
ADULT JI5912NVY  
YOUTH JJ0657NVY

**WHITE**  
ADULT JI5912WHT  
YOUTH JJ0657WHT

## WOVEN COURT SHORT

**TECHNOLOGY** AEROREADY  
**MATERIAL** 100% RECYCLED POLYESTER  
**ADULT SIZES** XS, S, M, L, XL, 2XL  
**YOUTH SIZES** 5-6Y, 7-8Y, 9-10Y, 11-12Y, 13-14Y

LIFECYCLE | —————> FEB 2028



**BLACK**  
ADULT JI5923BLK  
YOUTH JJ0653BLK

**TEAM NAVY**  
ADULT JI5923NVY  
YOUTH JJ0653NVY

**WHITE**  
ADULT JI5923WHT  
YOUTH JJ0653WHT

# COURT SPORTS



# 3S RUGBY

## 3S RUGBY JERSEY

**MATERIAL** 100% RECYCLED POLYESTER  
**ADULT SIZES** XS, S, M, L, XL, 2XL, 3XL  
**YOUTH SIZES** 5-6Y, 7-8Y, 9-10Y, 11-12Y, 13-14Y



<b>WHITE</b> ADULT CBR116 YOUTH CBR112	<b>NAVY</b> ADULT CBR114 YOUTH CBR110	<b>BLACK</b> ADULT CBR113 YOUTH CBR109	<b>RED</b> ADULT CBR115 YOUTH CBR111
--	---	--	--

## 3S RUGBY SHORT

**MATERIAL** 100% RECYCLED POLYESTER  
**ADULT SIZES** XS, S, M, L, XL, 2XL, 3XL  
**YOUTH SIZES** 5-6Y, 7-8Y, 9-10Y, 11-12Y, 13-14Y



<b>WHITE</b> ADULT CBR108 YOUTH CBR104	<b>NAVY</b> ADULT CBR106 YOUTH CBR102	<b>BLACK</b> ADULT CBR105 YOUTH CBR101	<b>RED</b> ADULT CBR107 YOUTH CBR103
--	---	--	--

## 3S RUGBY CONTACT TOP

**MATERIAL** 100% RECYCLED POLYESTER  
**ADULT SIZES** XS, S, M, L, XL, 2XL, 3XL  
**YOUTH SIZES** 5-6Y, 7-8Y, 9-10Y, 11-12Y, 13-14Y



<b>BLACK</b> ADULT CBR117 YOUTH KL2788	<b>NAVY</b> ADULT CBR118 YOUTH KL2789
--	---



# 3S RUGBY

MEN'S & YOUTH MATCHWEAR

# INCURZA CRICKET SELECT

# INCURZA CRICKET SELECT

## INCURZA SELECT SS POLO

**FIT** REGULAR  
**MATERIAL** 100% RECYCLED POLYESTER  
**ADULT SIZES** XS, S, M, L, XL, 2XL, 3XL  
**YOUTH SIZES** 5-6Y, 7-8Y, 9-10Y, 11-12Y, 13-14Y



**WHITE**  
**ADULT** CEC263  
**YOUTH** CEC265

## INCURZA SELECT LS POLO

**FIT** REGULAR  
**MATERIAL** 100% RECYCLED POLYESTER  
**ADULT SIZES** XS, S, M, L, XL, 2XL



**WHITE**  
**ADULT** CEC264

## INCURZA SELECT PANT

**FIT** SLIM  
**MATERIAL** 100% RECYCLED POLYESTER  
**ADULT SIZES** XS, S, M, L, XL, 2XL  
**YOUTH SIZES** 5-6Y, 7-8Y, 9-10Y, 11-12Y, 13-14Y



**WHITE**  
**ADULT** CEC261  
**YOUTH** CEC262

**NAVY**  
**ADULT** CEC275  
**YOUTH** CEC276

**BLACK**  
**ADULT** CEC277  
**YOUTH** CEC278



# INCURZA CRICKET ELITE

## INCURZA ELITE SS POLO

**FIT** REGULAR  
**MATERIAL** 100% RECYCLED POLYESTER  
**ADULT SIZES** XS, S, M, L, XL, 2XL, 3XL  
**YOUTH SIZES** 5-6Y, 7-8Y, 9-10Y, 11-12Y, 13-14Y



**WHITE**  
**ADULT** CEC269  
**YOUTH** CEC270

## INCURZA ELITE LS POLO

**FIT** REGULAR  
**MATERIAL** 100% RECYCLED POLYESTER  
**ADULT SIZES** XS, S, M, L, XL, 2XL



**WHITE**  
**ADULT** CEC268

## INCURZA ELITE SL SWEATER

**TECHNOLOGY** AEROREADY  
**MATERIAL** 100% RECYCLED POLYESTER  
**ADULT SIZES** XS, S, M, L, XL, 2XL  
**YOUTH SIZES** 5-6Y, 7-8Y, 9-10Y, 11-12Y, 13-14Y



**WHITE**  
**ADULT** CEC271  
**YOUTH** CEC272

## INCURZA ELITE LS SWEATER

**TECHNOLOGY** AEROREADY  
**MATERIAL** 100% RECYCLED POLYESTER  
**ADULT SIZES** XS, S, M, L, XL, 2XL  
**YOUTH SIZES** 5-6Y, 7-8Y, 9-10Y, 11-12Y, 13-14Y



**WHITE**  
**ADULT** CEC273  
**YOUTH** CEC274

## INCURZA ELITE PANT

**TECHNOLOGY** AEROREADY  
**MATERIAL** 100% RECYCLED POLYESTER  
**ADULT SIZES** XS, S, M, L, XL, 2XL  
**YOUTH SIZES** 5-6Y, 7-8Y, 9-10Y, 11-12Y, 13-14Y



**WHITE**  
**ADULT** CEC266  
**YOUTH** CEC267



# INCURZA CRICKET ELITE



# MATCHWEAR

WOMEN



ALL PRODUCTS SUITABLE  
FOR ALL TEAMSPORTS



COLLECTION MADE IN PART  
WITH RECYCLED MATERIALS



**BLACK  
WHITE**  
ADULT JZ2492



**TEAM NAVY BLUE 2  
WHITE**  
ADULT JZ2500



**TEAM POWER RED 2  
WHITE**  
ADULT JZ2490



**TEAM ROYAL BLUE  
WHITE**  
ADULT JZ2495



**TEAM GREEN  
WHITE**  
ADULT JZ2491



**WHITE  
BLACK**  
ADULT JZ2497



**LOCKER ROOM**  
CUSTOMIZABLE



**BLACK  
WHITE**  
ADULT JZ2533



**TEAM NAVY BLUE 2  
WHITE**  
ADULT JZ2534

**JERSEY**

ENT26 JSYW

**FIT** REGULAR  
**TECHNOLOGY** CLIMACOOL  
**MATERIAL** 100% RECYCLED POLYESTER  
**ADULT SIZES** 2XS, XS, S, M, L, XL, 2XL

**LIFECYCLE** |—————→ FEB 2030



**SHORT**

ENT26 SHOW

**FIT** REGULAR  
**TECHNOLOGY** CLIMACOOL  
**MATERIAL** 100% RECYCLED POLYESTER  
**ADULT SIZES** 2XS, XS, S, M, L, XL, 2XL

**LIFECYCLE** |—————→ FEB 2030

# ENTRADA 26

## TANK TOP

ENT26 TANK TOP

**FIT** REGULAR  
**MATERIAL** 91% RECYCLED POLYESTER / 9% ELASTANE

**ADULT SIZES** 2XS, XS, S, M, L, XL, 2XL

**LIFECYCLE** |—————> FEB 2030



**BLACK  
WHITE**  
ADULT KB3939



**TEAM NAVY BLUE 2  
WHITE**  
ADULT KB3940



**TEAM POWER RED 2  
WHITE**  
ADULT KB3942



**TEAM ROYAL BLUE  
WHITE**  
ADULT KB3944



**WHITE  
BLACK**  
ADULT KB3941



**BLACK  
WHITE**  
ADULT KB4003  
YOUTH KB3994



**TEAM NAVY BLUE 2  
WHITE**  
ADULT KB4002  
YOUTH KB3992



**TEAM POWER RED 2  
WHITE**  
ADULT KB4004  
YOUTH KB4000



**TEAM ROYAL BLUE  
WHITE**  
ADULT KB4011  
YOUTH KB3997

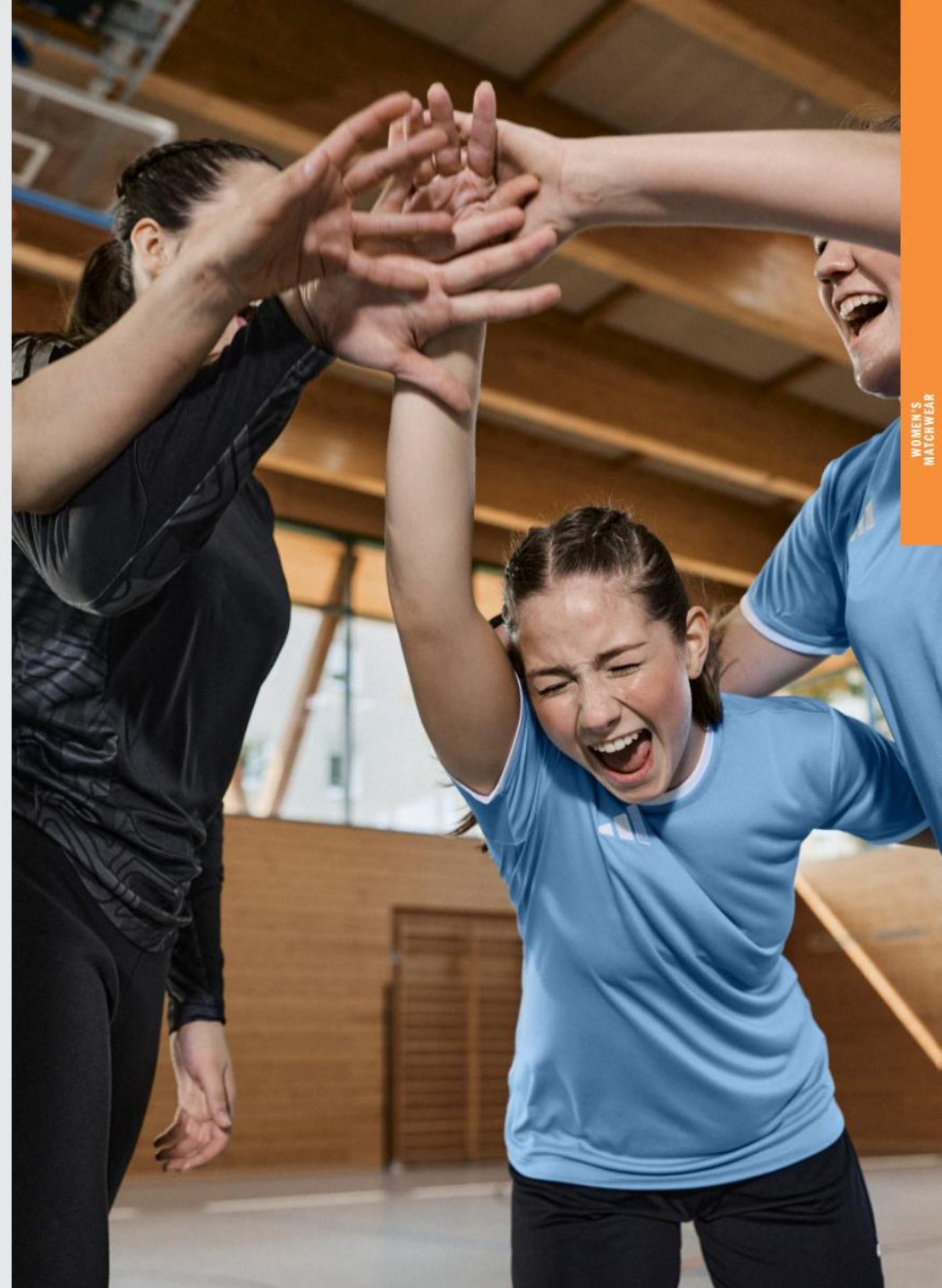
## SKORT

ENT26 SKORT

**FIT** REGULAR  
**MATERIAL** 100% RECYCLED POLYESTER

**ADULT SIZES** 2XS, XS, S, M, L, XL, 2XL  
**YOUTH SIZES** 116, 128, 140, 152, 164

**LIFECYCLE** |—————> FEB 2030



WOMEN'S  
MATCHWEAR

# RUNNING ADIZERO ESSENTIALS

## TANK

ADIZERO E TANK

**FIT** REGULAR  
**TECHNOLOGY** AEROREADY  
**MATERIAL** 100% RECYCLED POLYESTER

**ADULT SIZES** 2XS, XS, S, M, L, XL

**LIFECYCLE** | —————> **FEB 2028**



**BLACK**  
ADULT IN1180



**TEAM POWER RED 2**  
ADULT IT1822



**TEAM ROYAL BLUE**  
ADULT IT1457



**WHITE**  
ADULT IN1181

## TEE

ADIZERO E TEE

**FIT** SLIM  
**TECHNOLOGY** AEROREADY  
**MATERIAL** 100% RECYCLED POLYESTER

**ADULT SIZES** 2XS, XS, S, M, L, XL, 2XL

**LIFECYCLE** | —————> **FEB 2028**



**BLACK**  
ADULT IN1172



**TEAM POWER RED 2**  
ADULT IT1824



**TEAM ROYAL BLUE**  
ADULT IT1462



**WHITE**  
ADULT IN1173

## SHORT

ADIZERO E SHORT

**FIT** REGULAR  
**TECHNOLOGY** AEROREADY  
**MATERIAL** 100% RECYCLED POLYESTER

**ADULT SIZES** 2XS, XS, S, M, L, XL, 2XL

**LIFECYCLE** | —————> **FEB 2028**



**BLACK**  
ADULT IN8707



**TEAM POWER RED 2**  
ADULT IW6204



**TEAM ROYAL BLUE**  
ADULT IW6203

# RUNNING ADIZERO ESSENTIALS

## JACKET

ADIZERO E JCKT

**FIT** SLIM  
**MATERIAL** 100% RECYCLED POLYESTER  
**ADULT SIZES** 2XS, XS, S, M, L, XL, 2XL

**LIFECYCLE** | —————> **FEB 2028**



**BLACK**  
ADULT IT7595



**TEAM POWER RED 2**  
ADULT IT1821



**TEAM ROYAL BLUE**  
ADULT IT1455



**WHITE**  
ADULT IT7596



**BLACK**  
ADULT IP3085



**TEAM POWER RED 2**  
ADULT IT1472



**TEAM ROYAL BLUE**  
ADULT IT1471

## FULL LENGTH LEGGINS

ADIZERO E 1/1 L

**FIT** TIGHT  
**TECHNOLOGY** AEROREADY  
**MATERIAL** 85% RECYCLED POLYESTER / 15% ELASTANE

**ADULT SIZES** 2XS, XS, S, M, L, XL, 2XL

**LIFECYCLE** | —————> **FEB 2028**

# COURT SPORTS

# COURT SPORTS

## COURT TANK

**FIT** SLIM  
**TECHNOLOGY** AEROREADY  
**MATERIAL** 100% RECYCLED POLYESTER  
**ADULT SIZES** XS, S, M, L, XL, 2XL

LIFECYCLE | —————> FEB 2028



## COURT TEE

**FIT** SLIM  
**TECHNOLOGY** AEROREADY  
**MATERIAL** 100% RECYCLED POLYESTER  
**ADULT SIZES** XS, S, M, L, XL, 2XL

LIFECYCLE | —————> FEB 2028



## WOVEN COURT SHORT

**TECHNOLOGY** AEROREADY  
**MATERIAL** 100% RECYCLED POLYESTER  
**ADULT SIZES** XS, S, M, L, XL, 2XL

LIFECYCLE | —————> FEB 2028



## COURT SKIRT

**TECHNOLOGY** AEROREADY  
**MATERIAL** 100% RECYCLED POLYESTER  
**ADULT SIZES** XS, S, M, L, XL, 2XL



# INCURZA CRICKET SELECT

## INCURZA SELECT WOMENS PANT

**FIT** SLIM  
**MATERIAL** 100% RECYCLED POLYESTER  
**ADULT SIZES** XS, S, M, L, XL, 2XL



**NAVY**  
ADULT CEC280



**BLACK**  
ADULT CEC279



# INCURZA CRICKET SELECT



WOMEN'S MATCHWEAR



# TRAININGWEAR

MEN & YOUTH



ALL PRODUCTS SUITABLE  
FOR ALL TEAMSPTS



COLLECTION MADE IN PART  
WITH RECYCLED MATERIALS

TRAINING TOP

ENT26 TR TOP

**FIT** SLIM  
**TECHNOLOGY** CLIMACOOL  
**MATERIAL** 100% RECYCLED POLYESTER  
**ADULT SIZES** XS, S, M, L, XL, 2XL, 3XL  
**YOUTH SIZES** 5-6Y, 7-8Y, 9-10Y, 11-12Y, 13-14Y

LIFECYCLE | —————> FEB 2030



**BLACK  
WHITE**  
ADULT J26658  
YOUTH J26630

**TEAM NAVY BLUE 2  
WHITE**  
ADULT J26651  
YOUTH J26638

**TEAM POWER RED 2  
WHITE**  
ADULT J26650  
YOUTH J26636



**TEAM ROYAL BLUE  
WHITE**  
ADULT J26655  
YOUTH J26631

**TEAM GREEN  
WHITE**  
ADULT J26659  
YOUTH J26632



HALF ZIPPER

ZIPPER



**BLACK  
WHITE**  
ADULT K9848  
YOUTH J26550

**TEAM NAVY BLUE 2  
WHITE**  
ADULT K9847  
YOUTH J26549

TRAINING PANT

**FIT** REGULAR  
**TECHNOLOGY** CLIMACOOL  
**MATERIAL** 100% RECYCLED POLYESTER  
**ADULT SIZES** XS, S, M, L, XL, 2XL, 3XL  
**YOUTH SIZES** 5-6Y, 7-8Y, 9-10Y, 11-12Y, 13-14Y

LIFECYCLE | —————> FEB 2030

# ENTRADA 26

## JERSEY

ENT26 JSY

**FIT** SLIM  
**TECHNOLOGY** CLIMACOOL  
**MATERIAL** 100% RECYCLED POLYESTER  
**ADULT SIZES** XS, S, M, L, XL, 2XL, 3XL  
**YOUTH SIZES** 5-6Y, 7-8Y, 9-10Y, 11-12Y, 13-14Y

LIFECYCLE |-----> FEB 2030



**BLACK  
WHITE**  
ADULT JZ2505  
YOUTH JZ2524



**TEAM NAVY BLUE 2  
WHITE**  
ADULT JZ2504  
YOUTH JZ2522



**TEAM POWER RED 2  
WHITE**  
ADULT JZ2501  
YOUTH JZ2523



**TEAM ROYAL BLUE  
WHITE**  
ADULT JZ2506  
YOUTH JZ2531



**TEAM GREEN  
WHITE**  
ADULT JZ2503  
YOUTH JZ2528



**TEAM LIGHT GREY  
WHITE**  
ADULT JZ2511  
YOUTH JZ2525



**TEAM YELLOW  
BLACK**  
ADULT JZ2502  
YOUTH JZ2529



**WHITE  
BLACK**  
ADULT JZ2508  
YOUTH JZ2532

# ENTRADA 26

## SHORT

ENT26 SHO

**FIT** REGULAR  
**TECHNOLOGY** CLIMACOOL  
**MATERIAL** 100% RECYCLED POLYESTER  
**ADULT SIZES** XS, S, M, L, XL, 2XL, 3XL  
**YOUTH SIZES** 5-6Y, 7-8Y, 9-10Y, 11-12Y, 13-14Y

LIFECYCLE |-----> FEB 2030



**BLACK  
WHITE**  
ADULT JZ2521  
YOUTH JZ6531



**TEAM NAVY BLUE 2  
WHITE**  
ADULT JZ2513  
YOUTH JZ6532



**TEAM POWER RED 2  
WHITE**  
ADULT JZ2517  
YOUTH JZ6528



**TEAM ROYAL BLUE  
WHITE**  
ADULT JZ2520  
YOUTH JZ6524



# ENTRADA 26

## TRACK JACKET

ENT26 TK JKT

**FIT** SLIM  
**TECHNOLOGY** CLIMACOOL  
**MATERIAL** 100% RECYCLED POLYESTER  
**ADULT SIZES** XS, S, M, L, XL, 2XL, 3XL  
**YOUTH SIZES** 5-6Y, 7-8Y, 9-10Y, 11-12Y, 13-14Y

LIFECYCLE |-----> FEB 2030



**BLACK  
WHITE**  
ADULT JZ6587  
YOUTH JZ6608

**TEAM NAVY BLUE 2  
WHITE**  
ADULT JZ6589  
YOUTH JZ6611

**TEAM POWER RED 2  
WHITE**  
ADULT JZ6586  
YOUTH JZ6612



**TEAM ROYAL BLUE  
WHITE**  
ADULT JZ6593  
YOUTH JZ6607

**TEAM GREEN  
WHITE**  
ADULT JZ6585  
YOUTH JZ6613



**BLACK  
WHITE**  
ADULT KB3929



**TEAM NAVY BLUE 2  
WHITE**  
ADULT KB3930



**TEAM POWER RED 2  
WHITE**  
ADULT KB3932



**TEAM ROYAL BLUE  
WHITE**  
ADULT KB3931

## SLEEVELESS JERSEY

ENT26 SL JSY

**FIT** SLIM  
**TECHNOLOGY** CLIMACOOL  
**MATERIAL** 100% RECYCLED POLYESTER  
**ADULT SIZES** XS, S, M, L, XL, 2XL, 3XL

LIFECYCLE |-----> FEB 2030

ZIPPER



# ENTRADA 26

## TEE

ENT26 TEE

**FIT** REGULAR  
**MATERIAL** 100% COTTON-BCI  
**ADULT SIZES** XS, S, M, L, XL, 2XL, 3XL  
**YOUTH SIZES** 5-6Y, 7-8Y, 9-10Y, 11-12Y, 13-14Y

LIFECYCLE |-----> FEB 2030



ZIPPER



**BLACK WHITE**  
 ADULT J26675  
 YOUTH J26671



**TEAM NAVY BLUE 2 WHITE**  
 ADULT J26678  
 YOUTH J26673



**TEAM POWER RED 2 WHITE**  
 ADULT J26676  
 YOUTH J26674



**TEAM LIGHT GREY WHITE**  
 ADULT J26677  
 YOUTH J26672



**WHITE BLACK**  
 ADULT J26679  
 YOUTH J26670



**BLACK WHITE**  
 ADULT K00985  
 YOUTH J29131



**TEAM NAVY BLUE 2 WHITE**  
 ADULT J26557  
 YOUTH J29130

## TRAINING SHORT

ENT26 TR SHO

**FIT** REGULAR  
**TECHNOLOGY** CLIMACOOL  
**MATERIAL** 100% RECYCLED POLYESTER  
**ADULT SIZES** XS, S, M, L, XL, 2XL, 3XL  
**YOUTH SIZES** 5-6Y, 7-8Y, 9-10Y, 11-12Y, 13-14Y

LIFECYCLE |-----> FEB 2030

# ENTRADA 26

## POLO

ENT26 POLO

**FIT** REGULAR  
**TECHNOLOGY** CLIMACOOL  
**MATERIAL** 100% RECYCLED POLYESTER  
**ADULT SIZES** XS, S, M, L, XL, 2XL, 3XL  
**YOUTH SIZES** 5-6Y, 7-8Y, 9-10Y, 11-12Y, 13-14Y

LIFECYCLE |-----> FEB 2030



**BLACK WHITE**  
 ADULT J26660  
 YOUTH J26629



**TEAM NAVY BLUE 2 WHITE**  
 ADULT J26663  
 YOUTH J26627



**TEAM POWER RED 2 WHITE**  
 ADULT J26664  
 YOUTH J26626



**TEAM ROYAL BLUE WHITE**  
 ADULT J26665  
 YOUTH J26625



**TEAM LIGHT GREY WHITE**  
 ADULT J26662  
 YOUTH J26628



**WHITE BLACK**  
 ADULT J26661  
 YOUTH J26624





**BLACK  
WHITE**  
ADULT JZ6577  
YOUTH JZ6569

**TEAM NAVY BLUE 2  
WHITE**  
ADULT JZ6583  
YOUTH JZ6567

**TEAM POWER RED 2  
WHITE**  
ADULT JZ6576  
YOUTH JZ6568



**TEAM GREEN  
WHITE**  
ADULT JZ6581  
YOUTH JZ6563

**TEAM LIGHT GREY  
WHITE**  
ADULT JZ6578  
YOUTH JZ6562

## HOODY

ENT26 HOODY

**FIT** REGULAR  
**TECHNOLOGY** CLIMACOOL  
**MATERIAL** 100% RECYCLED POLYESTER  
**ADULT SIZES** XS, S, M, L, XL, 2XL, 3XL  
**YOUTH SIZES** 5-6Y, 7-8Y, 9-10Y, 11-12Y, 13-14Y

LIFECYCLE | —————> FEB 2030



A group of women are running on a treadmill in a gym. They are wearing green and black athletic wear. The background is a wooden wall with vents. The text 'TRAININGWEAR' and 'WOMEN' is overlaid on the right side of the image.

# TRAININGWEAR

WOMEN



ALL PRODUCTS SUITABLE  
FOR ALL TEAMSPORTS



COLLECTION MADE IN PART  
WITH RECYCLED MATERIALS

**TRAINING TOP**

ENT26 TR TOP W

**FIT** SLIM  
**TECHNOLOGY** CLIMACOOL  
**MATERIAL** 100% RECYCLED POLYESTER  
**ADULT SIZES** 2XS, XS, S, M, L, XL, 2XL

**LIFECYCLE** |—————→ FEB 2030



**BLACK  
WHITE**  
ADULT JZ6646

**TEAM NAVY BLUE 2  
WHITE**  
ADULT JZ6642

**TEAM POWER RED 2  
WHITE**  
ADULT JZ6645



**TEAM ROYAL BLUE  
WHITE**  
ADULT JZ6641



HALF ZIPPER

**TRAINING SHORT**

ENT26 TR SHOW

**FIT** REGULAR  
**TECHNOLOGY** CLIMACOOL  
**MATERIAL** 100% RECYCLED POLYESTER  
**ADULT SIZES** 2XS, XS, S, M, L, XL, 2XL

**LIFECYCLE** |—————→ FEB 2030



**BLACK  
WHITE**  
ADULT KD0982



**TEAM NAVY BLUE 2  
WHITE**  
ADULT JZ6659

ZIPPER



**BLACK  
WHITE**  
ADULT JZ6548



**TEAM NAVY BLUE 2  
WHITE**  
ADULT JZ6547

ZIPPER

**TRAINING PANT**

ENT26 TR PNT W

**FIT** REGULAR  
**TECHNOLOGY** CLIMACOOL  
**MATERIAL** 100% RECYCLED POLYESTER  
**ADULT SIZES** 2XS, XS, S, M, L, XL, 2XL

**LIFECYCLE** |—————→ FEB 2030

# ENTRADA 26

## JERSEY

ENT26 JSYW

**FIT** REGULAR  
**TECHNOLOGY** CLIMACOOL  
**MATERIAL** 100% RECYCLED POLYESTER  
**ADULT SIZES** 2XS, XS, S, M, L, XL, 2XL

**LIFECYCLE** |—————→ FEB 2030



**BLACK  
WHITE**  
ADULT JZ2492



**TEAM NAVY BLUE 2  
WHITE**  
ADULT JZ2500



**TEAM POWER RED 2  
WHITE**  
ADULT JZ2490



**TEAM ROYAL BLUE  
WHITE**  
ADULT JZ2495



**TEAM GREEN  
WHITE**  
ADULT JZ2491



**WHITE  
BLACK**  
ADULT JZ2497



**BLACK  
WHITE**  
ADULT JZ2533



**TEAM NAVY BLUE 2  
WHITE**  
ADULT JZ2534

## SHORT

ENT26 SHOW

**FIT** REGULAR  
**TECHNOLOGY** CLIMACOOL  
**MATERIAL** 100% RECYCLED POLYESTER  
**ADULT SIZES** 2XS, XS, S, M, L, XL, 2XL

**LIFECYCLE** |—————→ FEB 2030

# ENTRADA 26

## TEE

ENT26 TEE W

**FIT** REGULAR  
**MATERIAL** 100% COTTON-BCI  
**ADULT SIZES** 2XS, XS, S, M, L, XL, 2XL

**LIFECYCLE** |—————→ FEB 2030



**BLACK  
WHITE**  
ADULT JZ6682



**BLACK  
WHITE**  
ADULT JZ6597



**TEAM NAVY BLUE 2  
WHITE**  
ADULT JZ6599



**TEAM POWER RED 2  
WHITE**  
ADULT JZ6601



## TRACK JACKET

ENT26 TK JKTW

**FIT** SLIM  
**TECHNOLOGY** CLIMACOOL  
**MATERIAL** 100% RECYCLED POLYESTER  
**ADULT SIZES** 2XS, XS, S, M, L, XL, 2XL

**LIFECYCLE** |—————→ FEB 2030



**ACCESSORIES  
AND  
HARDWARE**

# TECHFIT

## COLD.RDY LONGSLEEVE TEE MEN

ADULT 55 €

**FIT** TIGHT  
**TECHNOLOGY** COLDREADY  
**MATERIAL** 84% RECYCLED POLYESTER / 16% ELASTANE

**ADULT SIZES** XS, S, M, L, XL, 2XL, 3XL

**LIFECYCLE** | → FEB 2028



**BLACK**  
ADULT J15623



**TEAM NAVY BLUE 2**  
ADULT J15636



**TEAM POWER RED 2**  
ADULT J15635



**TEAM ROYAL BLUE**  
ADULT J15634



**WHITE**  
ADULT J15624

## SHORT SLEEVE TEE MEN

ADULT 35 €

**FIT** TIGHT  
**TECHNOLOGY** AEROREADY  
**MATERIAL** 88% RECYCLED POLYESTER / 12% ELASTANE

**ADULT SIZES** XS, S, M, L, XL, 2XL, 3XL

**LIFECYCLE** | → FEB 2028



**BLACK**  
ADULT J14674



**WHITE**  
ADULT J14675

## LONG TIGHT MEN

ADULT 45 €  
YOUTH 35 €

**FIT** TIGHT  
**TECHNOLOGY** AEROREADY  
**MATERIAL** 83% RECYCLED POLYESTER / 17% ELASTANE

**ADULT SIZES** XS, S, M, L, XL, 2XL, 3XL  
**YOUTH SIZES** 116, 128, 140, 152, 164, 176V

**LIFECYCLE** | → FEB 2028



**BLACK**  
ADULT J17352  
YOUTH K180378



**WHITE**  
ADULT J17353



**BLACK**  
ADULT J12944  
YOUTH I12025



**TEAM NAVY BLUE 2**  
ADULT J12927  
YOUTH J17959



**TEAM POWER RED 2**  
ADULT J12926  
YOUTH J17960



**TEAM ROYAL BLUE**  
ADULT J12921  
YOUTH I12026



**WHITE**  
ADULT J12920  
YOUTH I1214



**BLACK**  
ADULT J11477  
YOUTH I1212



**TEAM NAVY BLUE 2**  
ADULT J11465  
YOUTH I1213



**TEAM POWER RED 2**  
ADULT J11464  
YOUTH J17958



**TEAM ROYAL BLUE**  
ADULT J17400  
YOUTH I1211



**WHITE**  
ADULT J17398  
YOUTH I1210

# TECHFIT

## LONGSLEEVE MEN

ADULT 40 €  
YOUTH 33 €

TF LS TEE M

**FIT** TIGHT  
**TECHNOLOGY** AEROREADY  
**MATERIAL** 88% RECYCLED POLYESTER / 12% ELASTANE

**ADULT SIZES** XS, S, M, L, XL, 2XL, 3XL  
**YOUTH SIZES** 116, 128, 140, 152, 164, 176

**LIFECYCLE** | → FEB 2028



## SHORT TIGHT MEN

ADULT 30 €  
YOUTH 25 €

TF SHRT TIGHT M

**FIT** TIGHT  
**TECHNOLOGY** AEROREADY  
**MATERIAL** 88% RECYCLED POLYESTER / 12% ELASTANE

**ADULT SIZES** XS, S, M, L, XL, 2XL, 3XL  
**YOUTH SIZES** 116, 128, 140, 152, 164, 176

**LIFECYCLE** | → FEB 2028

## BASE LAYER AND BIBS

### TEAM BASETEE

TEAM BASE TEE

ADULT £23

YOUTH £15

**FIT** FITTED  
**TECHNOLOGY** AEROREADY  
**MATERIAL** 100% RECYCLED POLYESTER  
**ADULT SIZES** XS, S, M, L, XL, 2XL  
**YOUTH SIZES** 5-6Y, 7-8Y, 9-10Y, 11-12Y, 13-14Y

LIFECYCLE | → FEB 2027



**BLACK**  
ADULT GN5677  
YOUTH GN5710



**NAVY BLUE**  
ADULT GN5675  
YOUTH GN5712



**TEAM POWER RED 2**  
ADULT GN5674  
YOUTH GN5711



**ROYAL BLUE**  
ADULT GK9088  
YOUTH GK9087



**TEAM GREEN**  
ADULT GN7504  
YOUTH GN7515



**TEAM YELLOW**  
ADULT GN7506  
YOUTH GN7514



**WHITE**  
ADULT GN5676  
YOUTH GN5713

## TRAINING SOCKS

### GRIP PRINTED CREW PERFORMANCE SOCKS



**BLACK  
WHITE**  
KQ9512



**WHITE  
BLACK**  
JZ3027

### CUSHIONED PRICE £23

FTBLGRP PRNT CU

**TECHNOLOGY** CLIMACOOOL SOCK  
**MATERIAL** 67% RECYCLED POLYESTER /  
18% PA6-REC / 11% COTTON-BCI  
/ 4% ELASTANE

**SIZES** S, M, L, XL

LIFECYCLE | → FEB 2029

### CREW PERFORMANCE SOCK



**BLACK  
WHITE**  
KQ9509



**WHITE  
BLACK**  
JZ3029

### CUSHIONED PRICE £10

FTBL CUSH SOCK

**TECHNOLOGY** CLIMACOOOL SOCK  
**MATERIAL** 66% RECYCLED POLYESTER /  
19% PA6-REC / 11% COTTON-BCI  
/ 4% ELASTANE

**SIZES** S, M, L, XL

LIFECYCLE | → FEB 2029

# ACCESSORIES

## TIRO LEAGUE WOOLIE

PRICE £23

TIRO L WOOLIE

**MATERIAL** 100% RECYCLED POLYESTER  
**SIZES** OSFC, OSFY, OSFW, OSFM, OSFL

**LIFECYCLE** |—————> FEB 2028

BLACK  
WHITE  
HS9765



## TIRO LEAGUE GLOVES

PRICE £18

TIRO L GLOVES

**MATERIAL** 97% POLYACRYLICS /  
2% RECYCLED POLYESTER /  
1% ELASTHANE

**SIZES** 7-, 8-, 9-

**LIFECYCLE** |—————> FEB 2028

BLACK  
WHITE  
HS9760



# ACCESSORIES

## TIRO CAP

PRICE £18

TIRO CAP

**MATERIAL** 100% COTTON-BCI  
**SIZES** OSFY, OSFM, OSFL

**LIFECYCLE** |—————> FEB 2028

BLACK  
WHITE  
JY7999



TEAM NAVY BLUE 2  
WHITE  
KE8449



TEAM POWER RED 2  
WHITE  
KE8450



TEAM ROYAL BLUE  
WHITE  
KE8451



BLACK  
WHITE  
KA7685



TEAM NAVY BLUE 2  
WHITE  
KD4249

## TIRO CAPTAINS ARMBAND

PRICE £15

TIRO L CAPT AB

**MATERIAL** 82% RECYCLED POLYESTER /  
18% ELASTODIENE

**SIZE** OSFM

**LIFECYCLE** |—————> FEB 2028

## BAGS

### TIRO DUFFLE BAG

#### MEDIUM

TIRO DUFFLE M

PRICE £33

MATERIAL 100% RECYCLED POLYESTER

DIMENSIONS W 60CM / L 30CM / H 29CM

VOLUME 57 LITRO

LIFECYCLE |-----> FEB 2030



BLACK  
WHITE

KB0786



TEAM NAVY BLUE 2  
WHITE

KB4243



TEAM POWER RED 2  
WHITE

KB0787

## BAGS

### TIRO DUFFLE BAG WITH BOTTOM COMPARTMENT



BLACK  
WHITE

JY7943



TEAM NAVY BLUE 2  
WHITE

KD4235



TEAM POWER RED 2  
WHITE

JY7953

#### MEDIUM

TIRO DU M BC

PRICE £38

MATERIAL 100% RECYCLED POLYESTER

DIMENSIONS W 60CM / L 30CM / H 33CM

VOLUME 52 LITRO

LIFECYCLE |-----> FEB 2030



BLACK  
WHITE

JY7962

#### TIRO TROLLEY XL

TIRO TROLLEY XL

PRICE £160

MATERIAL 100% RECYCLED POLYESTER

DIMENSIONS W 84CM / L 42CM / H 38CM

VOLUME 130 LITER

LIFECYCLE |-----> FEB 2030

# BAGS

## TIRO BACKPACK

TIRO BACKPACK

PRICE £35

MATERIAL 100% RECYCLED POLYESTER  
DIMENSIONS W 31CM / L 18CM / H 50CM  
VOLUME 28 LITER

LIFECYCLE  FEB 2030



BLACK  
WHITE  
JY7971



TEAM NAVY BLUE 2  
WHITE  
KD4223



TEAM POWER RED 2  
WHITE  
JY7972

## TIRO SHOEBAG

TIRO SHOEBAG

PRICE £12

MATERIAL 100% RECYCLED POLYESTER  
DIMENSIONS W 23CM / L 12CM / H 37CM  
VOLUME 11 LITER

LIFECYCLE  FEB 2030



BLACK  
WHITE  
JY7993



TEAM NAVY BLUE 2  
WHITE  
KD4246



TEAM POWER RED 2  
WHITE  
KD4247

## TIRO GYMSACK

TIRO GYMSACK

PRICE £10

MATERIAL 100% RECYCLED POLYESTER  
DIMENSIONS W 36CM / H 47CM  
VOLUME 14 LITER

LIFECYCLE  FEB 2030



BLACK  
WHITE  
JY7992



TEAM NAVY BLUE 2  
WHITE  
KD4245



TEAM POWER RED 2  
WHITE  
JY7991

# ACCESSORIES



BLACK  
WHITE  
IW9827



TEAM NAVY BLUE 2  
WHITE  
IW8154

## TIRO BOTTLE 0.75 L

TIRO BOT 0.75L

PRICE £9

MATERIAL 100% POLYETHYLENE  
VOLUME 0,75 LITER

LIFECYCLE  FEB 2027



# LOCKER ROOM

# CUSTOMIZE LIKE A PRO: STYLES, GRAPHICS & COLORS FOR YOUR SPORT



YOUR NUMBER



YOUR SPONSOR



YOUR CUSTOM DESIGN



YOUR SPONSOR



## WHAT IS LOCKER ROOM?

LOCKER ROOM IS YOUR GO-TO DESTINATION FOR HIGHLY SPECIALIZED AND CUSTOMIZED MATCHWEAR - TAILORED TO YOUR CLUB'S NEEDS ACROSS A WIDE RANGE OF TEAM SPORTS.

NEXT TO THAT, THE ALL-NEW ENTRADA26 RANGE DELIVERS VERSATILE STYLES BUILT FOR TRAININGS AND EVERYDAY CLUB REPRESENTATION. PERFECT FOR PLAYERS, COACHES, AND MEMBERS WHO WANT TO SHOW THEIR COLOURS BEYOND MATCH DAY.

## FAST DELIVERY. LOW MINIMUMS.

START YOUR ORDER WITH JUST 5 UNITS. WITH DELIVERY TIMES STARTING AT ONLY 45 DAYS, YOUR TEAM WILL BE READY TO COMPETE IN NO TIME.

## EASY CUSTOMIZATION WITH THE LOCKER ROOM PLATFORM

TO BEGIN YOUR LOCKER ROOM JOURNEY, SIMPLY CONTACT YOUR LOCAL ADIDAS TEAMWEAR RETAILER.

THANKS TO THE NEW SHARE FEATURE, YOUR RETAILER CAN GIVE YOU DIRECT ACCESS TO DESIGN AND PERSONALIZE YOUR TEAM'S GEAR - FASTER AND EASIER THAN EVER BEFORE.



**BASKETBALL**

# FAST MOTION DYED



MEN



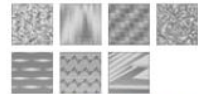
WOMEN

## JERSEY

### DYED FRONT AND BACK BODY



### SUBLIMATED SIDE PANELS



### MEN

ARTICLE: JY9090

FIT: REGULAR

### WOMEN

ARTICLE: K03101

FIT: LOOSE

**MATERIAL:** 100% POLYESTER (100% RECYCLED); HYDROPHILIC FINISH, CLIMACOOL, MADE WITH RECYCLED MATERIALS. STRETCH WOVEN, SWEAT WICKING

ADDITIONAL ADD-ONS MAY INCREASE MSRP. MSRP IS SUBJECT TO CHANGE.

# GAME TEMPO

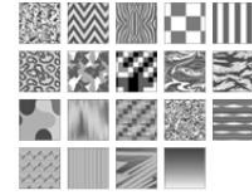


MEN



WOMEN

## JERSEY



### MEN

ARTICLE: KF6980

FIT: REGULAR

### WOMEN

ARTICLE: KF1413

FIT: LOOSE

**MATERIAL:** 100% PET-REC; MESH, WARP KNITTED

ADDITIONAL ADD-ONS MAY INCREASE MSRP. MSRP IS SUBJECT TO CHANGE.



MEN



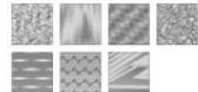
WOMEN

## SHORT

### DYED FRONT AND BACK BODY



### SUBLIMATED SIDE PANELS



### MEN

ARTICLE: KA7973

FIT: LOOSE

### WOMEN

ARTICLE: J19001

FIT: LOOSE

**MATERIAL:** 100% POLYESTER (100% RECYCLED); HYDROPHILIC FINISH, CLIMACOOL, MADE WITH RECYCLED MATERIALS. STRETCH WOVEN, SWEAT WICKING  
MEN: 7" & 9" INSEAM  
WOMEN: 6" & 8" INSEAM

ADDITIONAL ADD-ONS MAY INCREASE MSRP. MSRP IS SUBJECT TO CHANGE.

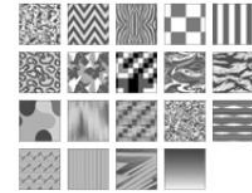


MEN



WOMEN

## SHORT



### MEN

ARTICLE: K68979

FIT: REGULAR

### WOMEN

ARTICLE: KF1412

FIT: LOOSE

**MATERIAL:** 100% PET-REC; MESH, WARP KNITTED

ADDITIONAL ADD-ONS MAY INCREASE MSRP. MSRP IS SUBJECT TO CHANGE.

# COURT MODE



MEN



WOMEN



YOUTH



MEN

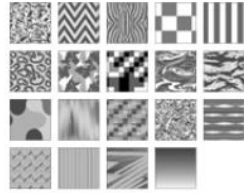


WOMEN



YOUTH

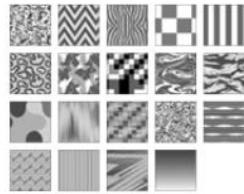
## JERSEY



MEN	WOMEN	YOUTH
ARTICLE: KF0798	ARTICLE: KF1411	ARTICLE: KF6504
FIT: REGULAR	FIT: LOOSE	FIT: REGULAR

**MATERIAL:**  
 MEN: 137 G 100% RECYCLED POLYESTER WITH HYDROPHILIC FINISH; MESH, WEFT KNITTED  
 WOMEN: 138 G 100% RECYCLED POLYESTER WITH HYDROPHILIC FINISH; MESH, WEFT KNITTED  
 YOUTH: 139 G 100% RECYCLED POLYESTER WITH HYDROPHILIC FINISH; MESH, WEFT KNITTED  
 ADDITIONAL ADD-ONS MAY INCREASE MSRP. MSRP IS SUBJECT TO CHANGE.

## SHORT



MEN	WOMEN	YOUTH
ARTICLE: KF0800	ARTICLE: KF1410	ARTICLE: KF6503
FIT: LOOSE	FIT: LOOSE	FIT: LOOSE

**MATERIAL:**  
 MEN: 140 G 100% RECYCLED POLYESTER WITH HYDROPHILIC FINISH; MESH, WEFT KNITTED  
 WOMEN: 141 G 100% RECYCLED POLYESTER WITH HYDROPHILIC FINISH; MESH, WEFT KNITTED  
 YOUTH: 142 G 100% RECYCLED POLYESTER WITH HYDROPHILIC FINISH; MESH, WEFT KNITTED  
 ADDITIONAL ADD-ONS MAY INCREASE MSRP. MSRP IS SUBJECT TO CHANGE.

# LEAGUE BOUND



MEN



WOMEN



YOUTH



MEN

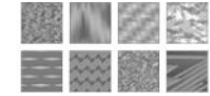


WOMEN



YOUTH

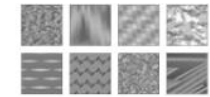
## JERSEY



MEN	WOMEN	YOUTH
ARTICLE: JM0067	ARTICLE: JM0075	ARTICLE: JM0079
FIT: REGULAR	FIT: LOOSE	FIT: REGULAR

**MATERIAL:** 100% POLYESTER (100% RECYCLED); HYDROPHILIC FINISH, CLIMACOOL, MADE WITH RECYCLED MATERIALS, DOUBLE KNIT MESH, SWEAT WICKING  
 MEN: 7" & 9" INSEAM  
 WOMEN: 9" & 9" INSEAM  
 YOUTH: 7" INSEAM  
 ADDITIONAL ADD-ONS MAY INCREASE MSRP. MSRP IS SUBJECT TO CHANGE.

## SHORT



MEN	WOMEN	YOUTH
ARTICLE: JM0068	ARTICLE: JM0076	ARTICLE: JM0080
FIT: LOOSE	FIT: LOOSE	FIT: LOOSE

**MATERIAL:** 100% POLYESTER (100% RECYCLED); HYDROPHILIC FINISH, CLIMACOOL, MADE WITH RECYCLED MATERIALS, DOUBLE KNIT MESH, SWEAT WICKING  
 MEN: 7" & 9" INSEAM  
 WOMEN: 9" & 9" INSEAM  
 YOUTH: 7" INSEAM  
 ADDITIONAL ADD-ONS MAY INCREASE MSRP. MSRP IS SUBJECT TO CHANGE.



## NEVER BENCHED



MEN



WOMEN

### JERSEY



#### MEN

ARTICLE: K0796

FIT: REGULAR

#### WOMEN

ARTICLE: KFL408

FIT: LOOSE

MATERIAL: 100% PCT-REC; INTERLOCK, WEFT-KNITTED

ADDITIONAL ADD-ONS MAY INCREASE MSRP. MSRP IS SUBJECT TO CHANGE.

### SHORT



#### MEN

ARTICLE: K0797

FIT: LOOSE

#### WOMEN

ARTICLE: KFL409

FIT: LOOSE

MATERIAL: 100% PCT-REC; INTERLOCK, WEFT-KNITTED

ADDITIONAL ADD-ONS MAY INCREASE MSRP. MSRP IS SUBJECT TO CHANGE.



MEN



WOMEN

# CRAZY ESSENTIALS



MEN



WOMEN

## REVERSIBLE PRACTICE JERSEY



### MEN WOMEN

ARTICLE: JM0071 ARTICLE: JM0074

FIT: REGULAR FIT: LOOSE

**MATERIAL:** 100% POLYESTER (100% RECYCLED); HYDROPHILIC FINISH, CLIMACOOOL, MADE WITH RECYCLED MATERIALS. STRETCH WOVEN, SWEAT WICKING

MEN: 7" & 9" INSEAM

WOMEN: 6" & 8" INSEAM

ADDITIONAL ADD-ONS MAY INCREASE MSRP. MSRP IS SUBJECT TO CHANGE.



MEN



WOMEN

## SHORT



### MEN WOMEN

ARTICLE: JM0072 ARTICLE: JM0073

FIT: LOOSE FIT: LOOSE

**MATERIAL:** 100% POLYESTER (100% RECYCLED); HYDROPHILIC FINISH, CLIMACOOOL, MADE WITH RECYCLED MATERIALS. STRETCH WOVEN, SWEAT WICKING

MEN: 7" & 9" INSEAM

WOMEN: 6" & 8" INSEAM

ADDITIONAL ADD-ONS MAY INCREASE MSRP. MSRP IS SUBJECT TO CHANGE.

# CRAZY LITE



MEN

## LONG SLEEVE



### MEN

ARTICLE: KF6526

FIT: LOOSE

**MATERIAL:** 100% PET-REC; DOUBLEKNIT, WEFT KNITTED

ADDITIONAL ADD-ONS MAY INCREASE MSRP. MSRP IS SUBJECT TO CHANGE.



MEN

## PANT



### MEN

ARTICLE: KF6546

FIT: LOOSE

**MATERIAL:** 100% PET-REC; TWILL, WOVEN

ADDITIONAL ADD-ONS MAY INCREASE MSRP. MSRP IS SUBJECT TO CHANGE.



COURT SPORTS

# COURT SPORTS



MEN



WOMEN



BOYS



GIRLS

## TEE

Ready for the fiercest racket sport competition, this adidas Court Tee is the perfect top to match the Court Knitted or Woven Shorts. Made from lightweight performance fabric, underarm mesh gussets ensure full freedom of movement and breathability where players heat up most. This tee has a straight hem and seam placement optimised for mobility. It's available in 25 different colours with an adidas Badge of Sport logo and optional 3-Stripes. Customisable embellishments include team crest, sponsor logo, sport category, player name and number and team name.



ONLY AVAILABLE FOR SUBLIMATED AND DYED PRODUCTS



ONLY AVAILABLE FOR DYED PRODUCTS



MEN	WOMEN	BOYS	GIRLS
ARTICLE: IN0296, J15912	ARTICLE: IN0102, J15888	ARTICLE: IN0299, J10657	ARTICLE: IN0104, J10642
FIT: REGULAR	FIT: REGULAR	FIT: REGULAR	FIT: SLIM

MATERIAL: 100% PET-REC-INTERLOCK  
ADDITIONAL ADD-ONS MAY INCREASE MSRP. MSRP IS SUBJECT TO CHANGE.

# COURT SPORTS



MEN



BOYS

## POLO

Ready for the fiercest racket sport competition, this adidas Court Tee is the perfect top to match the Court Knitted or Woven Shorts. Made from lightweight performance fabric, underarm mesh gussets ensure full freedom of movement and breathability where players heat up most. This tee has a straight hem and seam placement optimised for mobility. It's available in 25 different colours with an adidas Badge of Sport logo and optional 3-Stripes. Customisable embellishments include team crest, sponsor logo, sport category, player name and number and team name.

ONLY AVAILABLE FOR SUBLIMATED AND DYED PRODUCTS



ONLY AVAILABLE FOR DYED PRODUCTS



MEN	BOYS
ARTICLE: J15916	ARTICLE: J10660
FIT: REGULAR	FIT: REGULAR

MATERIAL: 100% PET-REC-INTERLOCK  
ADDITIONAL ADD-ONS MAY INCREASE MSRP. MSRP IS SUBJECT TO CHANGE.



MEN



WOMEN



BOYS



GIRLS

## WOVEN SHORT

Move at speed with agility and without restriction in these adidas Court Woven Shorts for all players. Woven performance fabric has a lightweight feel that allows for full court mobility, while a mesh crotch gusset enhances breathability. The elastic waistband can be secured with an internal drawcord, and the side pockets are specifically designed for ball storage. The shorts are available in 25 different colours with an adidas Badge of Sport logo and optional 3-Stripes. Customisable embellishments include team crest, sponsor logo, player name, player number and team name.

ONLY AVAILABLE FOR SUBLIMATED AND DYED PRODUCTS



ONLY AVAILABLE FOR DYED PRODUCTS



MEN	WOMEN	YOUTH	GIRLS
ARTICLE: J15923	ARTICLE: J15898	ARTICLE: J10653	ARTICLE: J13106
FIT: REGULAR	FIT: LOOSE	FIT: REGULAR	FIT: REGULAR

MATERIAL: 100% PET-REC-PLAIN WEAVE  
ADDITIONAL ADD-ONS MAY INCREASE MSRP. MSRP IS SUBJECT TO CHANGE.



MEN



BOYS

## KNITTED SHORT

Designed specifically for racket sports, these adidas Court Knitted Shorts allow players to move with speed and agility on the court. They're made from softly knitted performance fabric with a mesh crotch gusset for comfort and breathability. The elastic waistband with internal drawcord fits comfortably and securely, while the side pockets are engineered specifically for ball storage. Available in 25 different colours with a variety of graphics. Optional embellishments include team crest, sponsor logo, player name, team name and number.



ONLY AVAILABLE FOR SUBLIMATED AND DYED PRODUCTS



ONLY AVAILABLE FOR DYED PRODUCTS



MEN	BOYS
ARTICLE: IN0298, J15680	ARTICLE: IN0100, J13001
FIT: REGULAR	FIT: REGULAR

MATERIAL: 100% PET-REC-INTERLOCK  
ADDITIONAL ADD-ONS MAY INCREASE MSRP. MSRP IS SUBJECT TO CHANGE.

# COURT SPORTS



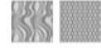
WOMEN



GIRLS

## TANK

The perfect in-match complement to the Court Skirt or Court Shorts, this adidas Court Tank provides a lightweight, breathable feel that's all about mobility. Ergonomic seams help this top move effortlessly and without distractions, and the sporty racerback design ensures there's no restriction on arm movement. The tank top is available in 24 different team colours and comes with the adidas Badge of Sport logo on the chest.



ONLY AVAILABLE FOR SUBLIMATED AND DYED PRODUCTS



ONLY AVAILABLE FOR DYED PRODUCTS



### WOMEN GIRLS

ARTICLE: J15901, J15908 | ARTICLE: J10617, J10648

FIT: SLIM | FIT: SLIM

MATERIAL: 100% PET REC-INTERLOCK

ADDITIONAL ADD-ONS MAY INCREASE MSRP. MSRP IS SUBJECT TO CHANGE.



WOMEN



GIRLS

## SKIRT

Play with total confidence in this adidas Court Skirt. The offering features two pieces in one: a short skirt with a comfortable elastic waistband plus a pair of integrated inner tights. The design provides a lightweight, distraction-free feel with full mobility on the tennis court, ideal for the demands of the game. It's available in 24 different colours with dyed fabric and a sublimated print.



ONLY AVAILABLE FOR SUBLIMATED AND DYED PRODUCTS



ONLY AVAILABLE FOR DYED PRODUCTS



### WOMEN GIRLS

ARTICLE: J14181, J14179 | ARTICLE: J14188, J14186

FIT: REGULAR | FIT: SLIM

MATERIAL: 100% PET REC-INTERLOCK

ADDITIONAL ADD-ONS MAY INCREASE MSRP. MSRP IS SUBJECT TO CHANGE.

# COURT SPORTS



WOMEN



GIRLS

## DRESS

Power through every game, set and match in the adidas Court Dress. This two-in-one tennis style includes separate tights to wear beneath the A-line dress. The dress has a sporty racerback design, so there's no restriction of arm movement. Strategic seams along both sides shape the fit for zero distractions during match play. Available in 24 different colours with sublimation print details.

ONLY AVAILABLE FOR SUBLIMATED AND DYED PRODUCTS



ONLY AVAILABLE FOR DYED PRODUCTS



### WOMEN GIRLS

ARTICLE: J15900 | ARTICLE: J10641

FIT: SLIM | FIT: SLIM

MATERIAL: 100% PET REC-INTERLOCK

ADDITIONAL ADD-ONS MAY INCREASE MSRP. MSRP IS SUBJECT TO CHANGE.



A hand holding a handball, with motion blur and a color gradient from blue to orange. The word "HANDBALL" is overlaid in white, bold, uppercase letters.

**HANDBALL**

# QUICKSET 25

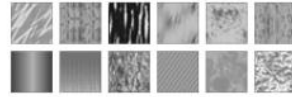


WOMEN

YOUTH

## LONG SLEEVE JERSEY

Every team has its own mix of talents. This custom volleyball jersey gives your team its own style to match. The soft fabric is cut to move. The build also features breathable mesh on the back and torso of stretch.



### WOMEN YOUTH

ARTICLE: JM4702 ARTICLE: JM4690

FIT: SLIM FIT: SLIM

MATERIAL: 88% PET REC/12% ELASTANE SINGLE JERSEY

ADDITIONAL ADD-ONS MAY INCREASE MSRP. MSRP IS SUBJECT TO CHANGE.

# QUICKSET 25

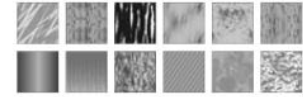


MEN

WOMEN

## SHORT SLEEVE JERSEY

Every team has its own mix of talents. This custom volleyball jersey gives your team its own style to match. The soft fabric is cut to move. The build also features breathable mesh on the back and torso of stretch.



### MEN WOMEN YOUTH

ARTICLE: KA1967 ARTICLE: JM4703 ARTICLE: JM4697

FIT: SLIM FIT: SLIM FIT: SLIM

MATERIAL: 88% PET REC/12% ELASTANE SINGLE JERSEY

ADDITIONAL ADD-ONS MAY INCREASE MSRP. MSRP IS SUBJECT TO CHANGE.



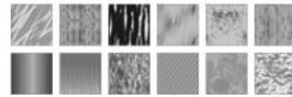
YOUTH



MEN

## SHORT

Every team has its own mix of talents. This custom volleyball jersey gives your team its own style to match. The soft fabric is cut to move. The build also features breathable mesh on the back and torso of stretch.



### MEN

ARTICLE: JM4709

FIT: REGULAR

MATERIAL: 100% PET REC-INTERLOCK

ADDITIONAL ADD-ONS MAY INCREASE MSRP. MSRP IS SUBJECT TO CHANGE.



WOMEN



YOUTH

## SHORT TIGHT

Every team has its own mix of talents. This custom volleyball jersey gives your team its own style to match. The soft fabric is cut to move. The build also features breathable mesh on the back and torso of stretch.



### WOMEN YOUTH

ARTICLE: JLS408 ARTICLE: JLS973

FIT: TIGHT FIT: TIGHT

MATERIAL: 85% PET REC/15% ELASTANE-INTERLOCK

ADDITIONAL ADD-ONS MAY INCREASE MSRP. MSRP IS SUBJECT TO CHANGE.

# QUICKSET 25



MEN



WOMEN



YOUTH



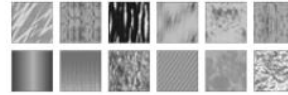
WOMEN



YOUTH

## SLEEVELESS JERSEY

Every team has its own mix of talents. This custom volleyball jersey gives your team its own style to match. The soft fabric is cut to move. The build also features breathable mesh on the back and tons of stretch.



**MEN**   **WOMEN**   **YOUTH**

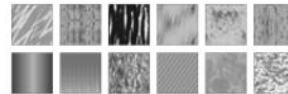
ARTICLE: JM4731   ARTICLE: JM4687   ARTICLE: KX2078

FIT: SLIM   FIT: SLIM   FIT: REGULAR

MATERIAL: 88% PET REC/12% ELASTANE SINGLE JERSEY

ADDITIONAL ADD-ONS MAY INCREASE MSRP. MSRP IS SUBJECT TO CHANGE.

## SLEEVES



**WOMEN**   **YOUTH**

ARTICLE: KQ5245   ARTICLE: NF1542

FIT: TIGHT

MATERIAL: 88% PET REC/12% ELASTANE, CLIMATECOOL

ADDITIONAL ADD-ONS MAY INCREASE MSRP. MSRP IS SUBJECT TO CHANGE.



**RUGBY**



# UNIONS



MEN



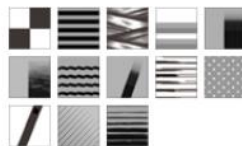
WOMEN



YOUTH

## JERSEY 4.0

Built to play strong on the pitch. This custom uniform lets the whole team look as one. It's built for comfort from sweat-wicking material and includes a jersey, shorts and matching socks.



### MEN WOMEN YOUTH

ARTICLE: DY7666 (REGULAR), DY7666 (SLIM) | ARTICLE: CBK120 (REGULAR), CBK119 (SLIM) | ARTICLE: DY7670 (REGULAR), NSRP: 405

FIT: REG/SLIM | FIT: REG/SLIM

MATERIAL: PIQUE, AEROREADY, RECYCLED MATERIALS BASE

ADDITIONAL ADD-ONS MAY INCREASE MSRP. MSRP IS SUBJECT TO CHANGE.

# UNIONS



## RS 450 CLUB RUGBY BALL

adidas' newest rugby ball is now available for you to customize for your team. The RS 450 features 3 ply construction and innovative grip suitable for all conditions. Engineered for a true flight, designed for training and game play. You can now bring your club identity to life with a fully bespoke adidas Rugby Ball. Add your club colours, club crests and customize further with sponsor logos or club initials.



### UNISEX

ARTICLE: CBR204

ADDITIONAL ADD-ONS MAY INCREASE MSRP. MSRP IS SUBJECT TO CHANGE.

## SHORTS 4.0

Built to play strong on the pitch. This custom uniform lets the whole team look as one. It's built for comfort from sweat-wicking material and includes a jersey, shorts and matching socks.



### MEN YOUTH

ARTICLE: DY7669 | ARTICLE: DY7667

FIT: REGULAR | FIT: REGULAR

MATERIAL: PIQUE, AEROREADY, RECYCLED MATERIALS BASE

ADDITIONAL ADD-ONS MAY INCREASE MSRP. MSRP IS SUBJECT TO CHANGE.



MEN



YOUTH



A group of five people, three men and two women, are posed in a room. They are all wearing bright yellow short-sleeved cricket jerseys with a circular logo on the chest and the Adidas logo on the right chest. The man on the far left is sitting on a stool, wearing black trousers and black sneakers. The man in the middle is also sitting on a stool, wearing black shorts, white socks, and black sneakers. The man on the far right is sitting on a stool, wearing grey trousers and white sneakers. Behind them, two women are standing, also wearing the same yellow jerseys. The woman on the left is wearing black shorts, and the woman on the right is wearing blue jeans. The room has a grey wall with framed pictures and a dartboard on the right. The floor is made of light-colored wood.

**CRICKET**

# CRICKET



## CRICKET GRAPHIC SS POLO

FULLY SUBLIMATED PERFORMANCE SHORT SLEEVE CRICKET JERSEY  
CHOOSE FROM 11 UNIQUE GRAPHIC OPTIONS



MEN	WOMEN	YOUTH
CCC101	CCC102	CCC103



## CRICKET GRAPHIC SL JUMPER

FULLY SUBLIMATED PERFORMANCE SLEEVELESS CRICKET JUMPER  
CHOOSE FROM 11 UNIQUE GRAPHIC OPTIONS



MEN	WOMEN	YOUTH
CCC113	CCC114	CCC115



## CRICKET GRAPHIC LS JUMPER

FULLY SUBLIMATED PERFORMANCE LONG SLEEVE CRICKET JUMPER  
CHOOSE FROM 11 UNIQUE GRAPHIC OPTIONS



MEN	WOMEN	YOUTH
CCC110	CCC111	CCC112



## CRICKET GRAPHIC LS POLO

FULLY SUBLIMATED PERFORMANCE LONG SLEEVE CRICKET JERSEY  
CHOOSE FROM 11 UNIQUE GRAPHIC OPTIONS



MEN	WOMEN	YOUTH
CCC104	CCC105	CCC106



## CRICKET GRAPHIC PANT

FULLY SUBLIMATED PERFORMANCE CRICKET TROUSER  
CHOOSE FROM 11 UNIQUE GRAPHIC OPTIONS



MEN	WOMEN	YOUTH
CCC107	CCC108	CCC109





**MULTI-SPORT**

# GAME N GO



MEN

## FULL ZIP HOODIE



### MEN

ARTICLE: KC2334

FIT: REGULAR

MATERIAL: FRENCH TERRY

ADDITIONAL ADD-ONS MAY INCREASE MSRP. MSRP IS SUBJECT TO CHANGE.

# GAME N GO



MEN

## PANT



### MEN

ARTICLE: KC2333

FIT: REGULAR

MATERIAL: FRENCH TERRY, ZIPPER POCKETS

ADDITIONAL ADD-ONS MAY INCREASE MSRP. MSRP IS SUBJECT TO CHANGE.



MEN

## HOODIE



### MEN

ARTICLE: KC2332

FIT: REGULAR

MATERIAL: 70% POLYESTER (100% RECYCLED)/30% COTTON

ADDITIONAL ADD-ONS MAY INCREASE MSRP. MSRP IS SUBJECT TO CHANGE.



MEN

## TEE



### MEN

ARTICLE: JL6754

FIT: REGULAR

MATERIAL: SINGLE JERSEY

ADDITIONAL ADD-ONS MAY INCREASE MSRP. MSRP IS SUBJECT TO CHANGE.

# GAME N GO



MEN

## SHORT



### MEN

ARTICLE: KC2336

FIT: REGULAR

MATERIAL: FRENCH TERRY, ZIPPER POCKETS

ADDITIONAL ADD-ONS MAY INCREASE MSRP. MSRP IS SUBJECT TO CHANGE.

# SPORTSWEAR ESSENTIALS



MEN

WOMEN

## FRENCH TERRY FULL ZIP HOODIE



### MEN

ARTICLE: K87330

FIT: REGULAR

### WOMEN

ARTICLE: J26883

FIT: REGULAR

### YOUTH

ARTICLE: K83443

FIT: REGULAR

ADDITIONAL ADD-ONS MAY INCREASE MSRP. MSRP IS SUBJECT TO CHANGE.

NO IMAGE AVAILABLE

YOUTH



MEN



WOMEN

## 3S FRENCH TERRY PANT



### MEN

ARTICLE: K87334

FIT: REGULAR

### WOMEN

ARTICLE: J26881

FIT: REGULAR

### YOUTH

ARTICLE: K83438

FIT: REGULAR

ADDITIONAL ADD-ONS MAY INCREASE MSRP. MSRP IS SUBJECT TO CHANGE.

NO IMAGE AVAILABLE

YOUTH



# SPORTSWEAR ESSENTIALS



MEN

## 3S PIQUE POLO SHIRT



### MEN

ARTICLE: K87332

FIT: REGULAR

ADDITIONAL ADD-ONS MAY INCREASE MSRP. MSRP IS SUBJECT TO CHANGE.



MEN



WOMEN

## FRENCH TERRY SHORT



### MEN

ARTICLE: K87333

FIT: REGULAR

### WOMEN

ARTICLE: J27866

FIT: REGULAR

### YOUTH

ARTICLE: KR3433

FIT: REGULAR

ADDITIONAL ADD-ONS MAY INCREASE MSRP. MSRP IS SUBJECT TO CHANGE.

NO IMAGE AVAILABLE

YOUTH

# SPORTSWEAR ESSENTIALS



MEN



WOMEN

## 3S SINGLE JERSEY TEE



### MEN

ARTICLE: K87335

FIT: REGULAR

### WOMEN

ARTICLE: J26882

FIT: REGULAR

### YOUTH

ARTICLE: KR3448

FIT: REGULAR

ADDITIONAL ADD-ONS MAY INCREASE MSRP. MSRP IS SUBJECT TO CHANGE.

NO IMAGE AVAILABLE

YOUTH



# LOGO TEE



MEN



WOMEN



YOUTH



MEN



WOMEN



YOUTH

## COTTON

Available in six base colours, this customisable adidas Cotton Logo Tee lets players represent their football team in casual settings. This style is modelled after an adidas key city graphic tee, with an adidas performance logo and customisable text to match the team name.



**MEN**   **WOMEN**   **YOUTH**  
 ARTICLE: IM7853   ARTICLE: IM7854   ARTICLE: IM7855  
 FIT: REGULAR   FIT: REGULAR   FIT: REGULAR

**MATERIAL:** SINGLE JERSEY-SILICON FINISH/ENZYMED FINISH  
 ADDITIONAL ADD-ONS MAY INCREASE MSRP. MSRP IS SUBJECT TO CHANGE.

# TECHFIT



MEN

## LONG SLEEVE TEE

TechFit is a performance base layer designed to give athletes a locked-in feel during training and competition. The TechFit uniform allows you to customise your base layer to match your team kit.



**MEN**  
 ARTICLE: JM4368  
 FIT: TIGHT

**MATERIAL:** 83% PET-REC/17% ELASTANE  
 ADDITIONAL ADD-ONS MAY INCREASE MSRP. MSRP IS SUBJECT TO CHANGE.

## POLYESTER

Available in six base colours, this customisable adidas Polyester Logo Tee lets players represent their football team in casual settings. This style is modelled after an adidas key city graphic tee, with an adidas performance logo and customisable text to match the team name.



**MEN**   **WOMEN**   **YOUTH**  
 ARTICLE: JM4717   ARTICLE: JM4719   ARTICLE: JM4718  
 FIT: REGULAR   FIT: REGULAR   FIT: REGULAR

**MATERIAL:** INTERLOCK-HYDROPHILIC FINISH  
 ADDITIONAL ADD-ONS MAY INCREASE MSRP. MSRP IS SUBJECT TO CHANGE.



MEN

## 3/4 TIGHT

TechFit is a performance base layer designed to give athletes a locked-in feel during training and competition. The TechFit uniform allows you to customise your base layer to match your team kit.



**MEN**  
 ARTICLE: JM4404  
 FIT: TIGHT

**MATERIAL:** 83% PET-REC/17% ELASTANE  
 ADDITIONAL ADD-ONS MAY INCREASE MSRP. MSRP IS SUBJECT TO CHANGE.

# TECHFIT



## SLEEVELESS TEE

TechFit is a performance base layer designed to give athletes a locked-in feel during training and competition. The TechFit uniform allows you to customise your base layer to match your team kit.



### MEN

ARTICLE: JL6758

FIT: TIGHT

MATERIAL: 83% PET-REC/17% ELASTANE

ADDITIONAL ADD-ONS MAY INCREASE MSRP. MSRP IS SUBJECT TO CHANGE.

# TECHFIT



MEN

## TEE

TechFit is a performance base layer designed to give athletes a locked-in feel during training and competition. The TechFit uniform allows you to customise your base layer to match your team kit.



### MEN

ARTICLE: JL6759

FIT: TIGHT

MATERIAL: 83% PET-REC/17% ELASTANE

ADDITIONAL ADD-ONS MAY INCREASE MSRP. MSRP IS SUBJECT TO CHANGE.



MEN

## LONG TIGHT

TechFit is a performance base layer designed to give athletes a locked-in feel during training and competition. The TechFit uniform allows you to customise your base layer to match your team kit.



### MEN

ARTICLE: JN4391

FIT: TIGHT

MATERIAL: 83% PET-REC/17% ELASTANE

ADDITIONAL ADD-ONS MAY INCREASE MSRP. MSRP IS SUBJECT TO CHANGE.



MEN

## SHORT TIGHT

TechFit is a performance base layer designed to give athletes a locked-in feel during training and competition. The TechFit uniform allows you to customise your base layer to match your team kit.



### MEN

ARTICLE: JN4398

FIT: TIGHT

MATERIAL: 83% PET-REC/17% ELASTANE

ADDITIONAL ADD-ONS MAY INCREASE MSRP. MSRP IS SUBJECT TO CHANGE.



## ACCESSORIES

### CUSTOM BIB 25

A must-have for training and match-day warmups, this adidas bib for football teams is made from lightweight polyester mesh that's stretchy, loose and easy to wear over a jersey. Its sleeveless, box-like design has a round neck hole and is taped along the hem, neckline and armholes to keep it fitting properly. Choose from seven different colours, plain or customised. Optional embellishments include sponsor logos, player number and player initials.



#### UNISEX

ARTICLE: JX6926

FIT: REGULAR

MATERIAL: MESH-HYDROPHILIC FINISH

ADDITIONAL ADD-ONS MAY INCREASE MSRP. MSRP IS SUBJECT TO CHANGE.



UNISEX

### ADISOCK 26 3S



#### UNISEX

ARTICLE: K87233

MATERIAL: 84% PEF-REC/11% COTTON-BCI/5% ELASTANE-SOCK UMBRELLA

ADDITIONAL ADD-ONS MAY INCREASE MSRP. MSRP IS SUBJECT TO CHANGE.



UNISEX

# ACCESSORIES



UNISEX

## TEAM SLEEVE 26 3S



### UNISEX

ARTICLE: #87234

MATERIAL: 95% PET REC/5% ELASTANE SOCK UMBRELLA

ADDITIONAL ADD-ONS MAY INCREASE MSRP. MSRP IS SUBJECT TO CHANGE.

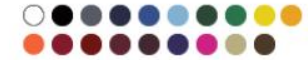
# ACCESSORIES



UNISEX

## TEAM SLEEVE 23

Turn any sock into a match sock. Just slip the Team Sleeve 23 over your favorite pair and you're ready to go. It's made of soft fabric with a snug fit at the base that keeps you locked-in on the move. Bonus, points: it holds your shin guards in place, so there's no need for tape.



### UNISEX

ARTICLE: #76546

MATERIAL: 96% PET REC/4% ELASTANE SOCK UMBRELLA

ADDITIONAL ADD-ONS MAY INCREASE MSRP. MSRP IS SUBJECT TO CHANGE.



UNISEX

## ADISOCK 23

Kick off in style in the Adisock 23. These custom football socks have a FORMOTION cut that fits like a second skin. The left/right-specific construction plus half-cushioned footbed keep you running the pitch in comfort.



### UNISEX

ARTICLE: #76545

MATERIAL: 84% PET REC/11% COTTON/BCI/5% ELASTANE SOCK UMBRELLA

ADDITIONAL ADD-ONS MAY INCREASE MSRP. MSRP IS SUBJECT TO CHANGE.



UNISEX

## CREW PERFORMANCE SOCKS



### UNISEX

ARTICLE: #23028

ADDITIONAL ADD-ONS MAY INCREASE MSRP. MSRP IS SUBJECT TO CHANGE.

# ACCESSORIES



UNISEX

## GRIP KNITTED CREW PERFORMANCE SOCKS



### UNISEX

ARTICLE: 123031

ADDITIONAL ADD-ONS MAY INCREASE MSRP. MSRP IS SUBJECT TO CHANGE.

# ACCESSORIES



UNISEX

## TIRO CAP



### UNISEX

ARTICLE: K24850,  
K24835

MATERIAL: 100% PET-REC

ADDITIONAL ADD-ONS MAY INCREASE MSRP. MSRP IS SUBJECT TO CHANGE.



UNISEX

## TRUCKER CAP



### UNISEX

ARTICLE: KX6694

MATERIAL: 100% PET-REC

ADDITIONAL ADD-ONS MAY INCREASE MSRP. MSRP IS SUBJECT TO CHANGE.



UNISEX

## DAD CAP



### UNISEX

ARTICLE: KX6682,  
KX6683

MATERIAL: 100% PET-REC

ADDITIONAL ADD-ONS MAY INCREASE MSRP. MSRP IS SUBJECT TO CHANGE.

FIND YOUR PERFECT FIT WITH ENTRADA'S VERSATILE MATCHWEAR AND TRAININGWEAR OPTIONS, MADE FOR ALL TEAM SPORTS AND EVERY ATHLETE.



# LOCKER ROOM

# ENTRADA 26



MEN



WOMEN



YOUTH

## SHORT SLEEVE JERSEY



MEN	WOMEN	YOUTH
ARTICLE: KB4031 (DYED), KE2479 (GRAPHIC), KE2490 (GRAPHIC)	ARTICLE: KB4027 (DYED), KE2480 (GRAPHIC), KE2483 (GRAPHIC)	ARTICLE: KB4030 (DYED), KE2481 (GRAPHIC), KE2484 (GRAPHIC)
FIT: SLIM	FIT: REGULAR	FIT: REGULAR

MATERIAL: 100% PET REC-INTERLOCK  
ADDITIONAL ADD-ONS MAY INCREASE MSRP. MSRP IS SUBJECT TO CHANGE.

# ENTRADA 26



MEN



WOMEN



YOUTH

## SHORT



MEN	WOMEN	YOUTH
ARTICLE: KB4029	ARTICLE: KB4033,	ARTICLE: KB4028
FIT: REGULAR	(INGEAM) MSRP: C30	FIT: REGULAR
	FIT: REGULAR	

MATERIAL: INTERLOCK-HYDROPHILIC FINISH  
ADDITIONAL ADD-ONS MAY INCREASE MSRP. MSRP IS SUBJECT TO CHANGE.

## LONG SLEEVE JERSEY



MEN	WOMEN	YOUTH
ARTICLE: KB4038	ARTICLE: JY5499	ARTICLE: JY5500
FIT: SLIM	FIT: REGULAR	FIT: REGULAR

MATERIAL: 100% PET REC-INTERLOCK  
ADDITIONAL ADD-ONS MAY INCREASE MSRP. MSRP IS SUBJECT TO CHANGE.



MEN



WOMEN



YOUTH

## SLEEVELESS JERSEY



MEN	WOMEN	YOUTH
ARTICLE: JY5496	ARTICLE: JY5497	ARTICLE: JY5498
FIT: SLIM	FIT: REGULAR	FIT: REGULAR

MATERIAL: INTERLOCK-HYDROPHILIC FINISH  
ADDITIONAL ADD-ONS MAY INCREASE MSRP. MSRP IS SUBJECT TO CHANGE.



MEN



WOMEN



YOUTH

# ENTRADA 26

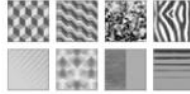


WOMEN



WOMEN

## TANK



### WOMEN

ARTICLE: J25249  
(GRAPHIC)  
J15501 (DYED)

FIT: SLIM

MATERIAL: SINGLE JERSEY-HYDROPHILIC FINISH

ADDITIONAL ADD-ONS MAY INCREASE MSRP. MSRP IS SUBJECT TO CHANGE.



WOMEN



GIRLS

## SKORT



### WOMEN

ARTICLE: J15502

FIT: REGULAR

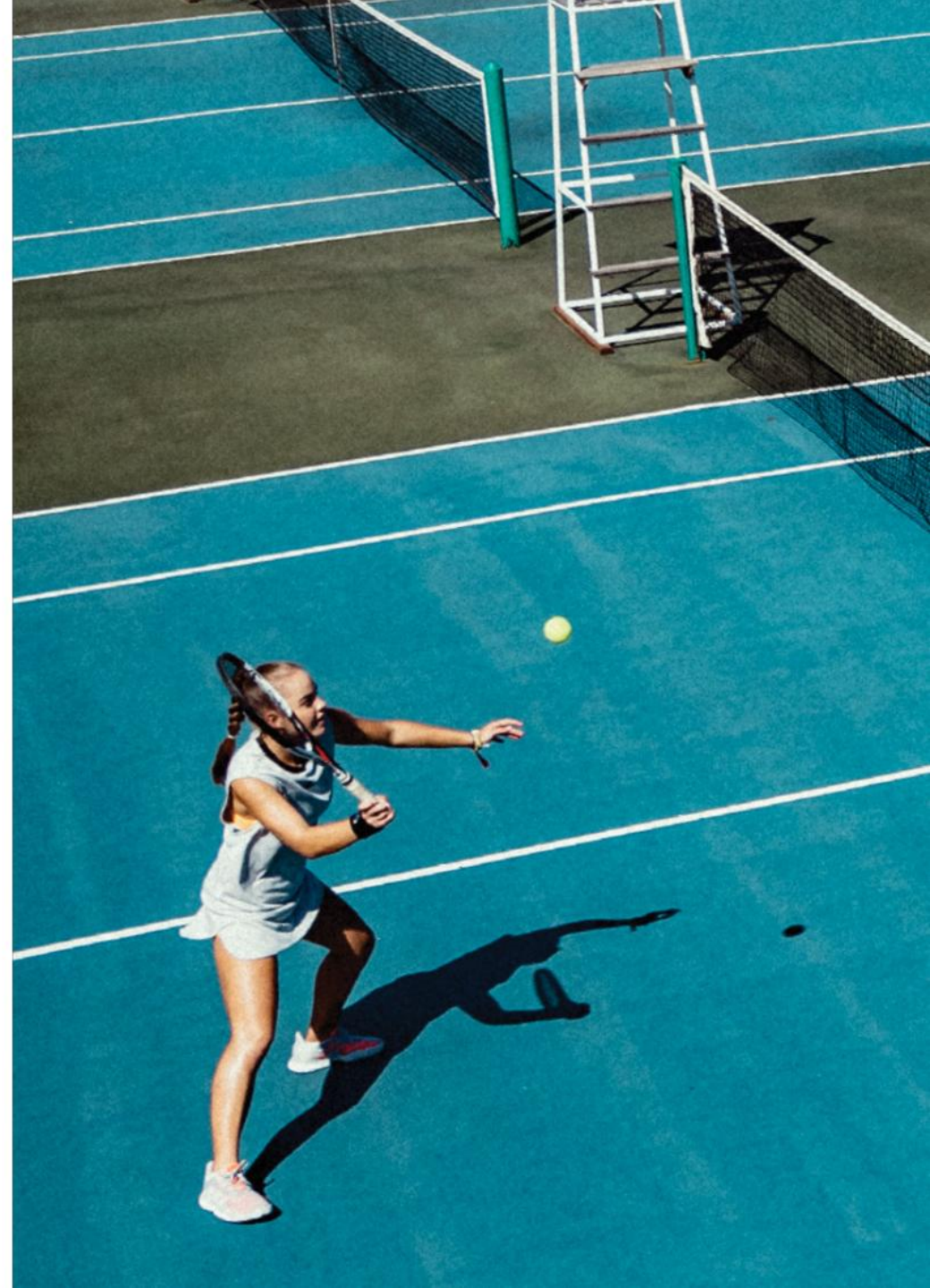
### GIRLS

ARTICLE: J15503

FIT: REGULAR

MATERIAL: INTERLOCK-HYDROPHILIC FINISH

ADDITIONAL ADD-ONS MAY INCREASE MSRP. MSRP IS SUBJECT TO CHANGE.



# ENTRADA 26



## TRAINING TOP



**MEN** **WOMEN** **YOUTH**  
 ARTICLE: K84014 ARTICLE: J15392 ARTICLE: J15400  
 FIT: SLIM FIT: SLIM FIT: SLIM

**MATERIAL:** DOUBLEKNIT-HYDROPHILIC FINISH  
 ADDITIONAL ADD-ONS MAY INCREASE MSRP. MSRP IS SUBJECT TO CHANGE.



## TRACK JACKET



**MEN** **WOMEN** **YOUTH**  
 ARTICLE: K84042 ARTICLE: K84037 ARTICLE: J15390  
 FIT: SLIM FIT: SLIM FIT: SLIM

**MATERIAL:** DOUBLEKNIT-HYDROPHILIC FINISH  
 ADDITIONAL ADD-ONS MAY INCREASE MSRP. MSRP IS SUBJECT TO CHANGE.

## TRAINING PANT



**MEN** **WOMEN** **YOUTH**  
 ARTICLE: K84013 ARTICLE: J15389 ARTICLE: J15395  
 FIT: SLIM FIT: SLIM FIT: SLIM

**MATERIAL:** DOUBLEKNIT-HYDROPHILIC FINISH  
 ADDITIONAL ADD-ONS MAY INCREASE MSRP. MSRP IS SUBJECT TO CHANGE.



# ENTRADA 26



MEN

## WIND PISTE



### MEN

ARTICLE: JY5303

FIT: REGULAR

MATERIAL: DOUBLEWEAVE-DWR-PPC FREE

ADDITIONAL ADD-ONS MAY INCREASE MSRP. MSRP IS SUBJECT TO CHANGE.

# ENTRADA 26



MEN



WOMEN



YOUTH

## HOODIE



### MEN

ARTICLE: KB4040

FIT: REGULAR

### WOMEN

ARTICLE: KB4036

FIT: REGULAR

### YOUTH

ARTICLE: JY5301

FIT: REGULAR

MATERIAL: FLEECE-SILICON FINISH / ENZYME FINISH

ADDITIONAL ADD-ONS MAY INCREASE MSRP. MSRP IS SUBJECT TO CHANGE.



MEN

## WIND PANT



### MEN

ARTICLE: JY5401

FIT: REGULAR

MATERIAL: DOUBLEWEAVE-DWR-PPC FREE

ADDITIONAL ADD-ONS MAY INCREASE MSRP. MSRP IS SUBJECT TO CHANGE.



MEN



WOMEN



YOUTH

## SWEAT PANT



### MEN

ARTICLE: KB4041

FIT: REGULAR

### WOMEN

ARTICLE: JY5308

FIT: REGULAR

### YOUTH

ARTICLE: JY5399

FIT: REGULAR

MATERIAL: FLEECE-SILICON FINISH/ENZYME FINISH

ADDITIONAL ADD-ONS MAY INCREASE MSRP. MSRP IS SUBJECT TO CHANGE.

# ENTRADA 26



MEN

## PRESENTATION JACKET



### MEN

ARTICLE: JY5396

FIT: REGULAR

MATERIAL: PLAIN WEAVE-HYDROPHILIC FINISH

ADDITIONAL ADD-ONS MAY INCREASE MSRP. MSRP IS SUBJECT TO CHANGE.

# ENTRADA 26



MEN



YOUTH

## PRESENTATION SHORT



### MEN

ARTICLE: JY5492

FIT: REGULAR

### YOUTH

ARTICLE: JY5493

FIT: REGULAR

MATERIAL: PLAIN WEAVE-HYDROPHILIC FINISH

ADDITIONAL ADD-ONS MAY INCREASE MSRP. MSRP IS SUBJECT TO CHANGE.



MEN

## PRESENTATION PANT



### MEN

ARTICLE: KB4039

FIT: REGULAR

MATERIAL: PLAIN WEAVE-HYDROPHILIC FINISH

ADDITIONAL ADD-ONS MAY INCREASE MSRP. MSRP IS SUBJECT TO CHANGE.



MEN



WOMEN



YOUTH

## POLO



### MEN

ARTICLE: JY5401

FIT: REGULAR

### WOMEN

ARTICLE: KB4035

FIT: REGULAR

### YOUTH

ARTICLE: JY5397

FIT: REGULAR

MATERIAL: TRICOT-HYDROPHILIC FINISH

ADDITIONAL ADD-ONS MAY INCREASE MSRP. MSRP IS SUBJECT TO CHANGE.

## JACKETS 26



MEN

YOUTH

### STADIUM



#### MEN YOUTH

ARTICLE: KB3917 ARTICLE: KB3916

FIT: REGULAR FIT: REGULAR

MATERIAL: 78G/50M PLAIN WEAVE

ADDITIONAL ADD-ONS MAY INCREASE MSRP. MSRP IS SUBJECT TO CHANGE.

## JACKETS 26



MEN

### LIGHT JACKET



#### MEN

ARTICLE: JY3394

FIT: REGULAR

MATERIAL: TAFFETA-DWR-PTC FREE

ADDITIONAL ADD-ONS MAY INCREASE MSRP. MSRP IS SUBJECT TO CHANGE.

### ALL WEATHER



#### MEN YOUTH

ARTICLE: KB3914 ARTICLE: KB3915

FIT: REGULAR FIT: REGULAR

MATERIAL: 110G/50M PLAIN WEAVE

ADDITIONAL ADD-ONS MAY INCREASE MSRP. MSRP IS SUBJECT TO CHANGE.



MEN

YOUTH



WITHOUT A BEAUTIFUL  
PLANET, THERE IS  
NO BEAUTIFUL GAME.  
FOR THE PLACES WE PLAY.

THE PLANET IS A PLAYGROUND. IT'S WHERE WE CONNECT, EXPLORE, AND FIND OURSELVES. FROM THE START WE HAVE ALWAYS BEEN THERE FOR THE ATHLETES. BUT TODAY, CLIMATE CHANGE IS CHANGING THE WAY WE PLAY. THAT'S WHY WE'RE SHIFTING OUR BUSINESS TO BE THERE FOR THE PLANET, TOO. BECAUSE WE BELIEVE THAT THROUGH SPORTS, WE HAVE THE POWER TO CHANGE LIVES. AFTER ALL, WITHOUT A BEAUTIFUL PLANET, THERE IS NO BEAUTIFUL GAME.

WE'RE TRANSFORMING OUR BUSINESS TO HELP REDUCE OUR IMPACT. AND WE'RE ON A MISSION TO INNOVATE FURTHER.

WE'RE CREATING PILOT PROGRAMS THAT CONTINUOUSLY LOOK FOR NEW WAYS IN WHICH WE CAN EXTEND THE LIFE OF PRODUCTS AND MATERIALS. AND WE'RE NOT DOING IT ALONE. WE'RE TEAMING UP WITH LIKE-MINDED PARTNERS WHO SHARE THE SAME PASSION.

SINCE 2024, WE'VE REPLACED VIRGIN POLYESTER WITH RECYCLED POLYESTER WHEREVER POSSIBLE.

BY 2025, WE'RE ON TRACK TO REDUCE OUR CARBON FOOTPRINT BY, ON AVERAGE, 15% PER PRODUCT, COMPARED TO 2017.

WE'RE TURNING ACTIVITY INTO ACTION THROUGH MOVE FOR THE PLANET BY WORKING WITH OUR IMPACT PARTNERS AROUND THE WORLD TO EDUCATE COMMUNITIES ON CLIMATE CHANGE THROUGH SPORT.

AND OUR ULTIMATE GOAL IS TO BE CLIMATE NEUTRAL BY 2050.

**MEN**

SIZE	CHEST	WAIST	HIP	INNER LEG
<b>XS</b> 40-42	82-87	71-75	82-86	81
<b>S</b> 44-46	88-94	76-82	87-93	81.5
<b>M</b> 48-50	95-102	83-90	94-101	82
<b>L</b> 52-54	103-111	91-99	102-110	82.5
<b>XL</b> 56-58	112-121	100-109	111-119	83
<b>2XL</b> 60-62	122-132	110-121	120-128	83.5
<b>3XL</b> 64-66	133-144	122-134	129-138	80.5

**WOMEN**

SIZE	CHEST	WAIST	HIP	INNER LEG
<b>XXS</b> 26-28	73-76	57-60	82-85	77.5
<b>XS</b> 30-32	77-82	61-66	86-91	78
<b>S</b> 34-36	83-88	67-72	92-97	78.5
<b>M</b> 38-40	89-94	73-78	98-103	79
<b>L</b> 42-44	95-101	79-85	104-110	79.5
<b>XL</b> 46-48	102-109	86-94	111-117	80
<b>2XL</b> 50-52	110-118	95-104	118-125	80.5

**KIDS**

AGE SIZE	BODY	CHEST	WAIST	INNER LEG
<b>5-6 YRS</b> 116	111-116	58.5-60.5	55.5-56	52
<b>6-7 YRS</b> 122	117-122	61-63	56.5-57	56
<b>7-8 YRS</b> 128	123-128	63.5-64	57.5-59	59
<b>8-9 YRS</b> 134	129-134	64.5-67.5	59.5-61.5	62
<b>9-10 YRS</b> 140	135-140	68-71	62-63.5	65
<b>10-11 YRS</b> 146	141-146	71.5-74.5	64-66	67
<b>11-12 YRS</b> 152	147-152	75-78	66.5-68	70
<b>12-13 YRS</b> 158	153-158	78.5-82	68.5-70.5	73
<b>13-14 YRS</b> 164	159-164	82.5-86	71-73	76
<b>14-15 YRS</b> 170	165-170	86.5-89	73.5-74.5	79
<b>15-16 YRS</b> 176	171-176	89.5-91.5	75-76.5	82

**INTERNATIONAL CONVERSION**

UK	DE	US	FR	IT
30	65	30	80	0
32	70	32	85	1
34	75	34	90	2
36	80	36	95	3
38	85	38	100	4
40	90	40	105	5
42	95	42	110	6
44	100	44	115	7
46	105	46	120	8

**SOCK SIZES**

SIZE	US	UK	EU	OLD SIZES
<b>KXL</b>	10.5K-12K	10K-11.5K	28-30	4K
<b>KXXL</b>	13K-1.5	12.5K-1	31-33	5K
<b>XS</b>	2.5-4	2-3.5	34-36	1
<b>S</b>	5-6	4.5-5.5	37-39	2
<b>M</b>	7-8.5	6.5-8	40-42	3
<b>L</b>	9-10.5	8.5-10	43-45	4
<b>XL</b>	11.5-13	11-12.5	46-48	5
<b>XXL</b>	13.5-15	13-14.5	49-51	6



©2025 ADIDAS AG. ADIDAS, THE 3-BAR LOGO AND THE 3-STRIPES MARK ARE REGISTERED TRADEMARKS OF ADIDAS.

# SPECIALIST SPORTS

[TEAMWEAR@SPECIALISTSPORTS.COM](mailto:TEAMWEAR@SPECIALISTSPORTS.COM)